

Temple Beth Shalom
702 SE 24th Avenue
Cape Coral, Florida 33990
(239) 772-4555

www.templebethshalomcc.org



TEMPLE BETH SHALOM

Inside this issue:

Rabbi's Reflections	1
Co-Presidents's Message	3
Oneg Shabbat Form	4
Vice President's Message	5
Brotherhood Report	8
Sisterhood Report	5
Committee Reports	9
New Members	20, 21
Birthdays/ Anniversaries	35
Business Directory	37
New Year's Greetings Throughout	

THE SHOFAR



2015/5776 High Holiday-Edition

Rabbi's Reflections ~ Rabbi Devora Buchen



Dear Friends

Ours is a generation desperately seeking spiritual sustenance. There are books on spiritualism, new age books spiritual gurus sought out by people trying to understand the materialism that pervades our society, and now Kabbalah has become a buzz word for the rich and famous.

Well, what about us? Where are we going? Are we part of that larger spiritual movement? Of course I may be biased but I think we are a little ahead if not right on target.

What is the central message? Three directions, First, Accept and embrace the diversity of all Jews and all denominations. We do not have to worry about that because we have always been a mish - mash. The second tenet extends the first; accept all Jewish and non-Jewish partners and their children; and all genders and all sexual orientations. Well, we have always counted all as part of a minyan. Besides, we have a female Rabbi. Finally, do not just observe but celebrate the Sabbath and holidays, make them joyous, full of song and singing and also encourage and practice regular Torah studies. I rest my case.

In other words, we are our own movement— without overt, external, directions we have evolved into a congregation that has created a spiritual framework about the celebration of life, a life that glories in human warmth, and that teaches that G-d is loving, approachable and comforting. We are a congregation that embraces all who seek to become part of a family.

I do believe that our congregation can shape the course of our history as we embark on an adventure of growth that nourishes our basic Jewish roots and practices the joy of being happy with our Jewishness and with our G-d...

L'Shana Tova Tikatevah

May you be blessed for a healthy and happy New Year!

Your Rabbi



Rabbi ~ Devora Buchen

Executive Board

Co-Presidents	Arnie Schwartz
	Mark Nudel
Vice~President	Frank Lazovick
Vice~President	Carin Hanan
Secretary	Fern Deutch
Treasurer	Sharon Rosenberg
Past~ President	Marty Burnette

Directors

Rheta Kanen	Asst. Secretary
Wendy Blyveis	Asst. Treasurer
Religious Practices	Marc Einstein
	Merle Nudel
Membership	Herb Gallop
Publications	Robin Razowsky
Social Activities	Maxine Morris
Fundraising	Denise Simenauer
Religious Education	Barby Barlow
Social Action	Marcia Strumwater
Building and Grounds	Nate Blyveis
	Asst. Marty Burnette

Brotherhood President

Joel Barlow

Sisterhood President

Suzie Hershfield

Music Department

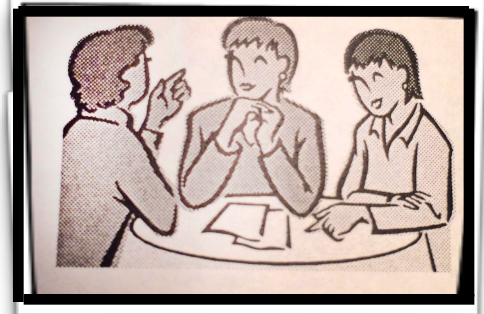
Director Rabbi Buchen

Our magnificent choir is composed of congregants who love to sing. If you would enjoy becoming a part of this dedicated group, please contact Lenore Cohen at 239-549-6035.

Shofar Advertising IMPORTANT UPDATE



If you are interested in advertising your business or professional service in the Shofar, please call Robin Razowsky 312-816-3700 for information about rates.



Temple Caring Community

Do you need transportation to Temple or a health care provider? Please contact the office at 239-772-4555

Area Food Banks

Cape Coral Caring Center and other local food banks in need have been getting gifts of canned goods and non-perishable items thanks to generous support of our TBS members and friends. The need is great, so please keep the donations coming.

Judaica Shop

Unique Israeli items, Yahrzeit candles, and other wonderful items are available by catalog in the TBS foyer. Place your order during office hours and enjoy our special discount.



Ritual & Study Schedule

Shabbat Services

Kabbalat Shabbat
Fridays 7:30p
Family Service
1st Friday/Month 7:30p

Religious School

Thursdays, 4:30-6:00p

Adult Torah Study

Saturdays, 10:30a



TBS Wish List

The Religious School can always use healthy, nutritious pre-packaged snacks that **DO NOT** contain nuts or dairy.

***Temple Beth Shalom's
Ongoing Activities Continues...***

Temple Beth Shalom Library

This small space contains a growing collection of volumes for members to borrow. Please consider making a contribution. Meanwhile, take a book and enjoy!

Mah Jongg Players

Wednesdays, 11:00AM-3:30PM.
Contact Audrey Sands at
239- 543- 4288

Send Along Some Sunshine

A happy occasion like a birthday or anniversary is a perfect reason to send Some Sunshine.



A personalized card sent to family and friends can also remind them they are not alone while getting back on the road to good health, or recovering from the loss of a loved one. Your friends and family will feel the warmth of your well wishes and those of our temple.

The cost for a "Send Along Some Sunshine" card, including postage is \$5.00. Payment can be sent to or dropped off at the Temple.

Contact Penny MacIntyre by phone at 239-541-3951, or send an email to shkel@comcast.net with your request.

Connecting

Please alert Wendy Blyveis of a Temple member's illness, accident or problem. A card will be sent from the Temple.

**FROM YOUR Co-
PRESIDENT**

by
Arnie Schwartz



Holiday Greetings

We're starting another New Year and what a terrific year this will be with all the plans that are in the works. Maxine is planning some super interesting social activities, Marc has another bowling night planned for September, the Honoree Banquet Committee has already met to begin planning for Jan. 23rd, Brotherhood is gearing up to start the Bowling League, Sisterhood is planning another Bingo night, and I hear there may even be a dance or two in the works. And that's only the start. Our Religious School will be starting soon, Merle and Maxine are planning for the High Holiday Services, Sisterhood has begun planning for the "Break the Fast," Brotherhood will be constructing the Sukkah shortly after the High Holidays, and Chanukah is not far off after that. Really, what does it mean to you to be part of our Temple Family? I know what it means to me but everyone has their own answer to that question. Think about your answer for a moment. Now think about what it would be like if Temple Beth Shalom were not part of your life. One of the traditions we have during Yom Kippur is the High Holiday Appeal which is an essential element in helping us meet our expenses. This year, through the generosity of you our members, we have been able to eliminate our mortgage. However, we still need to be able to continue meeting our yearly operating expenses. For us, as in the majority of all congregations, the High Holiday appeal is an essential part of our fund raising efforts. If we are to break even again this year, our Appeal will have to be as successful as it was last year, especially since we'll have less income from our elections. I sincerely hope we all can contribute at least as much as last year, but hopefully more! I truly love this congregation, our Rabbi, and the meaning and direction TBS has given my life. I'm looking forward to serving you again as your President alongside Marc Nudel and our entire Board of Directors who give so much of their time and energy to making this Temple the best place to be in Southwest Florida.

Barbara and I would like to wish you a good and sweet New Year.

L'Shanah tovah tikkathevu- May you be written down (in the Book of Life) for a good year; and may we add, a **healthy year.**

**From your Co-
President**

by
Marc Nudel



As we approach the High Holy Days, it is a very exciting time for Temple Beth Shalom. We have welcomed four new individuals and five new families to our Temple Family! Two people have already joined our choir, and four others have shown interest in the TBS Bowling League. As Cape Coral continues to grow, hopefully this is only the beginning of the expansion of our Temple Family.

At this time of the year, temples ask for the financial support needed to maintain daily activities, pay salaries, and get the building ready for the New Year. Did you know that dues account for approximately 80% of most operating budgets? It is up to each and every one of us to do as much as we can to maintain a strong Temple and positive Jewish Identity in the City of Cape Coral. I've also been working with the Executive Board and our attorneys on an opportunity with our vacant property next door that could quite possibly help secure this future.

Imagine... when our dues and fundraising opportunities cover our expenses, our "wish list" dreams become closer to reality: a new Torah that can be read with ease, and lifted and rolled without the worry of damage; a new parking lot that doesn't become a lake with each heavy rain; a bema without steps out to eliminate trips and falls! And we know wishes can become reality, as it wasn't too long ago that our "wish list" included a new kitchen and new bathrooms, and together we made them happen.

I mentioned last month about being positive about our future. Again, it will take each and every one of us doing our share to make sure these future aspirations become realities! Now, more than ever before, I am positive we have a bright future ahead of us!

Merle and I wish you and your family a Happy and Healthy New Year.

Marc

Temple Beth Shalom Sisterhood Oneg Sponsor Form

The sisterhood of Temple Beth Shalom will be honored to cater your Oneg. The cost will depend on what you want to serve. Apart from the cost, a donation to Sisterhood is appreciated.*



Standard Oneg
Coffee, Tea, Soda, Fruit & Assorted Sweets

\$100.00

Add -Ons

Cheese Platter \$50.00

Ice Cream Cake per availability
from our own baker \$30.00

Birthday/Anniversary Cake to be
determined by your order

Regular bagels and cream cheese \$25.00
Chocolate challah from our own baker \$10.00

Bagels, Lox and cream cheese
(per 30 people) \$25.00
White fish spread or herring
(per 25 people) \$25.00

Vegetables and dip \$20.00
Hummus and Pita Chips \$15.00

*As always, you are welcome to bring any desserts
to an Oneg without sponsoring it.

NAME:

PHONE NUMBER:

DATE OF ONEG:

SPONSORSHIP OF ONEG:

Please contact Fern Deutch at (239) 257-4703
or (ferntbs@gmail.com) for date availability
and menu.

702 SE 24th Avenue * Cape Coral, Florida
33990 * 239-772-4555*



**VICE-
PRESIDENT'S
MESSAGE**

by
Frank Lazovick



**Religious
Education
by
Barb Barlow**



**SISTERHOOD
by
Suzie Hershefeld**

Dear TBS Family,

It is that time of year again, when the high holidays are getting closer. We spent a lot of time thinking about the year that is ending. How many of our friends have left us, who was in the hospital and returned to us, what had happened in our family, and what lies ahead as we age. If we are lucky, we will stay healthy. We will be able to attend

all of the services of both holidays.

We are in indeed fortunate we have a temple to worship in. We were able to pay off our mortgage

which made our financial picture easier. To our members that made this happen, THANK YOU VERY MUCH.

Our membership is on the rise which will also help. We are able to retain most of our present members.

We show an increase compared with last year. Congratulations Herb Gallop on a job well done. This is the time when we have the "High Holiday Appeal". Let us try to give a little more this year so we can continue to make the financial success easier on the entire family. It would be nice to finish the year with a surplus for a change.

L'Shana Tova,
Frank

As I write this article in late August, we are busy planning for two events: a back-to-school bowling and pizza party for students and their families on August 30 and the start of Religious School on September 3. We thought a party would be a fun way to end the summer and get the new and "old" students, as well as their families, acquainted. I am looking forward to both events!

I am happy to report that our Hebrew teacher, Aliza Bental, is returning. She has just come back from Israel where she collected many items to augment the school curriculum.

The Religious School calendar for September through December 2015 is as follows:

September 3, 10	Class in Session
September 17	No class-High
Holidays [see Children Services Schedules below]	
September 24	Class in Session

October 1	Class in
Session-Decorate Sukkah & Pizza	
October 8, 15, 22, 29	Class in Session

November 5, 12, 19	Class in Session
November 26	No class-
Thanksgiving	

December 3, 10, 17	Class in Session
December 24, 31	No class-Winter
Break	

January 7, 2016	Class in Session
-----------------	------------------

Other important events and dates for Religious School families:

September 14	Rosh Hashanah
Children's Service, 11 am	
September 23	Yom Kippur
Children's Service, 11 am	

October 2	Sukkot &
	Shabbat
October 9	Simchat Torah &
Shabbat	

December 6	Temple
Chanukah (Latke) Party	
December 6	Families light
first Chanukah candle	
December 11	Chanukah &
	Shabbat-
	Students
	bring
	Chanukiah
	to light with
	Rabbi.

Wishing you and those you hold dear a sweet year filled with health, happiness and peace.

**TBS Events Planned Just for
YOU!**

Your TBS Sisterhood is excited to announce upcoming events that will bring us together in fun, food and family!

So mark your calendars for the following dates. Invite your friends, family and neighbors to join in... and get ready to enjoy yourself!

Bingo and Tacos and Salad, Oy Vey! –

Saturday, October 10th. Doors open at 5pm, dinner at 6pm and Bingo at 7pm. Cost is \$20/ person.

We will start with a Taco dinner prepared by our favorite Chef Charlie. After we've filled our bellies, it will be time to test your luck with Bingo!

Did you know that the game of bingo can be traced back to a lottery game called "Il Giuoco del Lotto d'Italia" played in Italy in c.1530. Hugh J. Ward standardized the modern game at carnivals in and around the Pittsburgh and Western Pennsylvania areas in the early 1920s. He went on to copyright "Bingo" and author the rule book on it in 1933.

How to Taste Wine Like a Pro –

Wednesday, November 18 at 7pm. Cost is \$15/person, \$12/designated driver.

Join *The Wine Whisperer*, Jerry Greenfield as he teaches you everything you wanted to know about pairing food and wine. We will taste six wines and learn which fruit and cheese best compliments each. No stuffy sommelier, Jerry makes great wine easy and fun to understand ... and enjoy!

Jerry has travelled extensively in the wine regions of California, France, and Italy, and attends many trade and private tastings throughout the year. He has been teaching wine seminars since 2003. For three years he served as Wine Director for the Southwest Florida Wine & Food Fest. Jerry's new book, *Secrets of the Wine Whisperer* will be available for purchase at our event.

Details and flyers will be available shortly. For now, make sure to mark your calendars and spread the word!

High Holy Days 5776 2015 • 5776 Service Schedule

Selichot

Saturday evening, September 5th

Coffee & Dessert beginning at 8:00 pm Havdalah and Selichot Service beginning at

8:30 pm

Rosh Hashanah Services

Sunday, September 13th, 7:30 pm

Monday, September 14th, 10:00 am

Children's Services: 11:00 am

Light luncheon and Taschlich Ceremony following the morning services at Temple Beth Shalom

Cemetery Visitation Service

Sunday morning, September 20th, 11:00 am Coral Ridge Cemetery

We will gather at the gate of the "Beit Hakvarot HaKodesh" to remember and honor our dearly departed loved ones—no matter where they are buried.

Yom Kippur Services

Tuesday, September 22nd, 7:30 pm, Kol Nidre

Wednesday, September 23 Morning Services: 10:00 am—1:00 pm Children's Services: 11:00 am

Afternoon Services: Mincha 3:30pm, followed by Yizkor Memorial and Neilah Services

Concluding Shofar and Havdalah

Break the Fast at Sundown, approximately 6:00 pm (Reservations required.)

TBS Family & Friends

“Fun Day of Bowling”

September 26, 2015

7pm-9pm

\$20 Bowlers/ \$10 Cheerleaders

2 games Bowling
(including shoes)

2 slices of pizza and a drink

Raffle Prizes

All Star Lanes

2848 N. Tamiami Trail, Ft. Myers
(near the Shell Factory)

Please support your Fundraising Committee
Reservations and money (payable to TBS, note
Bowling) must be received by 9/18/15

Let's have some summer fun!!!





Brotherhood **Notes**

by
Joel Barlow

Summer is supposed to be a quiet time at Temple Beth Shalom, and it has been quiet!! Sunday, August 23, witnessed the most action by the Brotherhood all summer. We had a "kick-off" brunch and meeting that was attended by twenty-six brothers, including four new ones. A special welcome to our new brothers; Bert Kurwin, Michael Swanson, David Sher and Larry Epstein!

At this meeting, the officers for the next two years were presented:

President: Joel Barlow (interim)
Vice President: Bill Padoll
Vice President: Barry Belkin
Treasurer: Joel Barlow
Secretary: Stuart Berman

Thank you for agreeing to serve.

The New Year is almost here, and the Brotherhood has planned a long list of activities. This year our TBS Bowling League will meet at All Star Lanes, N. Fort Myers, beginning Oct. 12. See Barry Belkin or Joel Barlow for details. Our annual Samuel S. Belkin Golf Tournament is scheduled for April 3, 2016, see Bill Padoll. Of course, we will continue to support our Temple in a variety of ways, including the Shabbat Greeter Program, High Holiday Ushers, construction of Sukkot booth, Latke Fry at Hanukkah, Dec. 6, and Brotherhood Shabbat, Feb. 12.

This year, the Brotherhood and Sisterhood are co-sponsoring the TBS Sukkot Dinner, Friday, Oct. 2. Also, the Brotherhood and Nate Blyveis are co-sponsoring a large tree trimming and removal project to beautify the Temple grounds. Thank you, Nate.

Numerous fun activities are being planned. These include, local cruises, a fishing trip, touring a local rum distillery, attending a Miracle baseball game and sponsoring a Temple picnic. Details will become clear at our next monthly meeting, Monday, Sept. 28.

To be successful, all of these activities require the financial and active support of our Temple men. Please join the Brotherhood by sending your \$25.00 check (made out to TBS Brotherhood) to the Temple or by giving it to any of our officers.

L'Shana Tova,

Joel Barlow



Religious Studies

by
Marc Einstein

Happy New Year 5776. We hope you will join us to celebrate the coming New Year. The schedule of services and activities can be found in the weekly bulletin or on the Temple's website:

<http://www.templebethshalomcc.org/>

Merle Nudel has been busy getting everything ready for the High Holiday services. The Choir is preparing for their participation as well. If you have an interest in joining the choir, please contact the Rabbi. Although Marlene & I won't be back at that time, we will be there in spirit. We expect to be back in time for Sukkot Shabbat. We look forward to an exciting Fall and Winter season. Please join us as often as you can for Shabbat Services and Torah study. If anyone is interested in joining the Religious Practices committee, please contact me.

*May you be blessed with
health, happiness and
shalom*

Georgette Bothner





Fundraising

by

Denise Simenauer

Fundraising took a new step by becoming an affiliate of an on-line Judaica store, Traditions Judaica Gifts, Inc. It is located in Pompano Beach, FL and has wonderful and reasonably priced items available and they will ship the items to you. Temple Beth Shalom receives 10% back from every purchase which goes through our link.

Please visit their website using this link:

http://www.traditionsjewishgifts.com/cgi-traditionsjewishgifts/sb/ref.cgi?storeid=*10eb9258ae0704409f33&name=AF231-Temple_Beth_Shalom

You must use this link in order for us to get our 10% back. If you go to their website directly, we will not receive the 10%. They are currently offering a special coupon to all Temple Beth Shalom members. Enter your special COUPON CODE: AF231, and you will receive \$5.00 off your orders, with no minimum order required. You can also visit the Temple Beth Shalom website and click on Resources. On the Resources page you will see a box on the left that lists Judaica Store and you will also find it in the list of resources. Click on that and you will access the TBS Judaica website link. HAPPY SHOPPING!!! As we celebrate the high holy days and think of the past year and the coming year, it is a time to reflect on what being a member of the Temple Beth Shalom family really means to you. Is it just a place of worship or have you let it become a part of your life? How much do you really value your relationship with God, preserving your heritage or the heritage of your loved one, the loving embrace of the Rabbi and TBS friends, the children's activities, Torah study, participating in the service, the brotherhood and sisterhood activities, singing in or listening to our choir, the bowling league, the picnics, the dances and bingo nights, the Oneg Shabbat, standing hand in hand at the end of Shabbat service, aliyot, birthday & anniversary celebrations and blessings, Naches, and the dear friends who have become like family to you. Temple Beth Shalom is all of this and more. TBS cannot survive on dues alone. You have a chance to demonstrate the value and impact that Temple Beth Shalom has or will have on your life by making a generous contribution to TBS during this season. So when you make your donation, please remember that you are not only fulfilling one of Judaism's most sacred obligations, **you are investing in something that you care deeply about.** Whether you are able to contribute a lot or a little, the important thing is that you are helping. Every donation is needed and very much appreciated.

***Kudos to Nate Blyveis
and the Brotherhood***

A BIG SHOUT OUT TO NATE BLYVEIS AND THE BROTHERHOOD FOR ARRANGING WITH A LANDSCAPING COMPANY TO HAVE ALL THE TREES ON OUR PROPERTY PROFESSIONALLY TRIMMED. IN DOING SO, WE WERE ABLE TO SAVE THE MAGNIFICENT MAHOGANY TREE JUST TO THE LEFT OF THE ENTRANCE. THE TEMPLE GROUNDS LOOK GORGEOUS! WE ARE SO BEHOLDEN TO NATE AND THE BROTHERHOOD FOR THIS BEAUTIFICATION PROJECT!

TODA RABA!

**YOU HAVE A CHOICE
EACH AND EVERY SINGLE DAY.**

I CHOOSE TO FEEL BLESSED.

I CHOOSE TO FEEL GRATEFUL.

I CHOOSE TO BE EXCITED.

I CHOOSE TO BE THANKFUL.

I CHOOSE TO BE HAPPY.

Temple Library

The books in our temple library are being sorted and organized on the shelves to make the space more user friendly. Please stop by to see our progress.

We accept Jewish-related books in good condition and large print general interest books. If you have books you'd like to donate, please put them in the donation box in the library. Children's books, cook books and novels are especially desirable.



Sisterhood Potluck Dinner and Painting of wine glasses

On Wednesday September 2nd starting at 5:30 the Sisterhood hosted a potluck dinner. Once dinner was completed everyone try our hands at painting wine glasses for our wine tasting event in November.

ALL MATERIALS WERE SUPPLIED.

NO TALENT NEEDED!

Maxine brought Israeli music for our listening pleasure and maybe even folk dancing pleasure. Georgette and Suzie brought the wine to add to the festivities. Everyone who came brought a dish to share and enjoyed the evening having fun at this pre holiday celebration with the Sisterhood.

Vice President
Message
 by
Carin Hanan

Lee and I have been on quite the rollercoaster for the past month and, frankly, I'm not sure I would have made it through without my TBS family... so this is both a loving thank you and encouragement to each of you to participate as fully as you can in this very special place we call Temple Beth Shalom. End of July... we lost a beloved brother (Marty) and a dear friend (Sheila). Who was there to help us grieve and, more importantly, to help us get through our grief? Our dear Rabbi and our dear friends. Next challenge... Lee was hospitalized and required two surgeries to get back on his feet. Again, who was there to help us shoulder the stress? Our dear Rabbi and our dear friends. Let's stop a minute and talk about "our dear Rabbi". Not only does she call or visit every day, she LISTENS. When Lee needed someone for sympathy, she was right there. When I needed someone to whine to, she was right there. And when we needed someone to remind us to have faith (in God, in the doctors, and in ourselves), she was right there. And let's also talk about "our dear friends". No one can be intimate friends with the entire congregation. I'd advise you to create a circle of intimates, because, boy, do they come through in tough times. From collecting mail, to finding medical referrals, to preparing a "welcome home meal", I am eternally grateful that I'm part of such a circle. Of course, even the most challenging roller coaster has its highs as well as its lows. August 7th we welcomed our second grandson, Cameron David Moore and, boy, is he a beauty! (We don't have to talk about how crazy it was that Lee was having surgery in one hospital while our daughter was giving birth in another across town.) And on August 25th, our precious first grandson, Spencer Henry Hanan, celebrated his first birthday. Who celebrated with us and toasted the boys (and their parents) with us? Our TBS Family, of course.

There's so much more to belonging to TBS than attending High Holy Day services and the occasional Shabbat. We've created a community here.. a culture really... that provides year-round and, when necessary, daily support. Tasks to keep us young and busy. Occasions to celebrate (like births, b'nai mitzvot, and "invasions from the north"). Even moral support when we need it most (like times of illness or bereavement). There's nothing quite like TBS and we are very proud and grateful to be a part of it. As the High Holy Days approach, I hope you will decide to support TBS as generously as you can, to participate as fully as we do, and to reap the same rewards that we do on a daily basis.



Then 1980's ?



Now 2015



Building and
Grounds
Maintenance
 by
Nate Blyveis

As chairperson of the Building and Grounds Committee of Temple Beth Shalom, I see my duty is to help keep the doors open, the air-conditioner running, the lights on, and keeping supplies—supplied. After that there is a list of items that I would like to do, and a bigger list of items that other people would like me to do. In the picture on the left you can see who planted the tree. If anyone knows who they are, please tell me. Years ago I was on the building and grounds committee when the committee decided to make a list of items to be completed by priority. The parking lot is on the top of the list. That was put on hold because of a generous donation by someone to begin remodeling the kitchen. Then, a certain stench got the bathroom remodeling project going. Next there was the rear fence that got torn down and the Brotherhood put up the money for a living fence. The list now includes washing and painting parts of the exterior, putting tar down where the rear driveway was torn up to install the dishwasher, remodeling the bima to eliminate the dangerous step-up that is invisible to everyone,, installing a new microphone system that is military-grade so that the Rabbi does not have to beat on it, removing the bird nests in the porte-cochere, extending the porte-cochere so 100 cars can fit under when it rains (just kidding), trimming trees and removing and replacing the dead ones, painting the Holocaust memorial and finally fixing the parking lot. I am sure that there are more items that need attention but I must inform you that (1.) nothing will be started until I am fully recovered from my knee replacement and (2) I find someone to hold the ladder for me (as my wife insists) Please contact me if you would like to volunteer.

In closing, I must admit that I could not do this job without Marty Burnette's help and guidance. He has done this job quite a long time, and I was his helper once, and now he is my mentor.

Thanks so much Marty

How you can donate to Temple Beth Shalom.

Bronze Memorial Plaques in the Sanctuary

Contact – Marty Burnette Cost – \$500 and up

Sara Teitlebaum Memorial Registry of Remembrance

Contact – Nate Blyveis Cost – \$100

Tree of Life Plaques

A location where you can remember the good things that have happened in your life.

Contact – Nate Blyveis Cost – \$18 to \$100

High Holiday Appeal

These funds are used for general operating expenses.

Contact – Temple

Aliyahs

Donations that are traditionally made after being called up to the Torah.

Contact – Temple Cost – \$18 or up

Torah Fund

These funds will be used to purchase a new Torah which is needed.

Contact – Temple

Misheberach, Sunshine, Condolence Cards

These are cards that are sent from the Temple in your name (to someone who is ill, for someone who has passed, for a happy occasion, etc.) for a small donation to the Temple.

Contact – Penny MacIntyre Cost – \$5

Yahrzeit Donations

Donations made in memory of your departed

Contact – Temple

Rabbi's Discretionary Fund

These funds are given to the Rabbi for the Rabbi's determination of charitable needs

Contact – Rabbi

Tributes

Tributes are donations that may be earmarked for specific established funds. They may be dedicated to some person or persons you wish to honor.

Contact – Temple

Samuel S. Beckerman Scholarship Fund

These funds are restricted to be given out each year to a student of the Temple for their educational needs. A committee of the family, and their attorney make the decision. The recipient is listed in the Shofar.

Contact – Betty Ann Beckerman

Book Plates

These funds are restricted to purchasing prayer books. The bookplate is attached to a prayer book with dedications, and any excess funds are turned over to operational expenses.

Contact – Temple Cost – \$35

Holocaust Memorial Fund

These funds are restricted for use in maintaining or upgrading the Holocaust Memorial Park at the south end of the Temple parking lot.

Contact – Temple

Religious School

These funds are restricted for use by our religious school

Contact – Temple

General Donations

These unrestricted donations are used for general operating expenses

Contact – Temple

Sisterhood or Brotherhood

Contact – Temple



L' Shana Tova Tikatevu

***May you be blessed with Joy,
Good Health and Peace in the
New Year!***

***May we all be inscribed in the
Book of Life!***

Love to our Temple

Rabbi and Irv





*The Sisterhood of Temple Beth Shalom
Wishes you a Happy and Sweet New Year!*



*May everyone of
Temple Beth Shalom
have a
Healthy and Sweet New Year!*

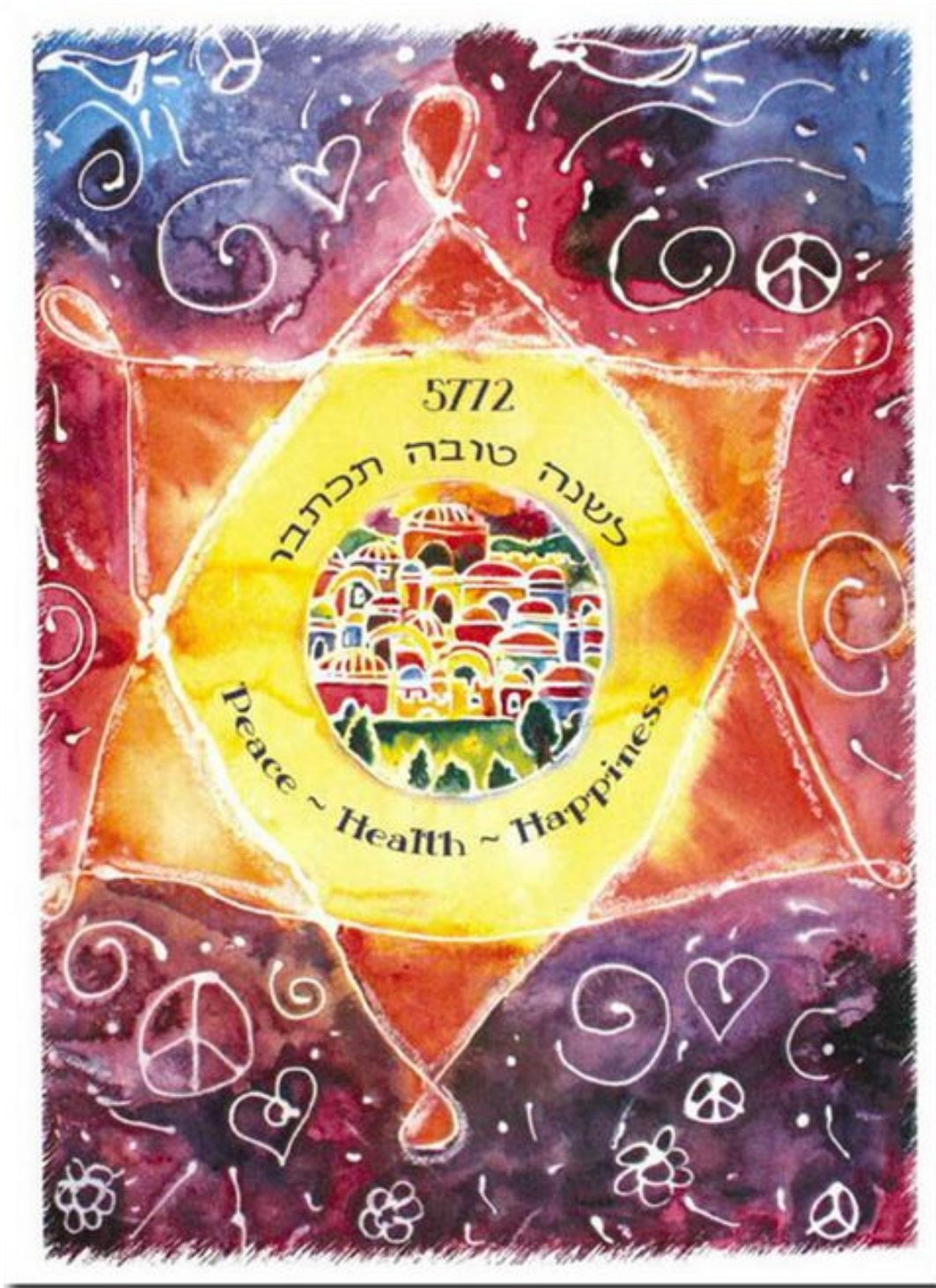
The Brotherhood of Temple Beth Shalom

As we dip our apples in honey,
we will think of
all the people who have made
our lives sweet.



We will be thinking of you!
Shana Tova!

Denise, Peter & Renato Simenauer



*May you and those you love
be blessed
with a sweet year!*

Barby and Joel Barlow



*May you find
Health, Happiness
and Peace
throughout the coming year!*

Sharon Rosenberg



*L' Shanah Tovah
Have a sweet year!*



*May you be inscribed
for a year of
health, happiness and
peace!*



*Barbara & Arnold
Schwartz*



BINGO & Tacos & Salad

Saturday, October 10, 2015

Doors open 5:30 pm- dinner 6:00- 7:00

Bingo following dinner

\$20 non-refundable admission includes dinner and 10 games of Bingo

Each player will receive 6 cards per game for 10 games. Additional sets of 6 cards per game for 10 games can be purchased for \$10.

Tickets must be purchased by noon October 5

Tickets will not be on sale past this deadline

Soft drinks, water & ice provided or BYOB

TBS Hall, 702 SE 24th Ave, Cape Coral 33990

All ticket sales through Fern 239-257-4703 or Suzie 239-770-5896

Name_____ Phone_____

Email_____

Number of players @ \$20____

Extra card sets @ \$10 ____Amount enclosed_____

Make checks payable to TBS Sisterhood.

Mail to: 702 SE 24th Ave. Cape Coral, FL 33990



Welcome to Temple Beth Shalom's New Members

James and Carly Ritter have lived in Fort Myers for 20 years. James owns a retail souvenir shop in Siesta Key, Sarasota. The Ritters have two children, Abigail, 15, and Jacob, 13. They enjoy family time together, travel and bicycle trips on Sanibel Island and in various regions of Florida, including Fort Lauderdale and Miami.

Fay Targove is a long-time resident of Fort Myers. She started coming to Southwest Florida years ago with her daughter, who now lives in Washington, DC. Fay also has two sons who live in New York State. Before moving to Florida, Fay lived in the Bronx and worked as a professional entertainer at the "Borsht Belt" hotels in the Catskill Mountains, where she sang, danced and played accordion. Fay also had a career as a teacher educator. She loves music and has her own choir at her senior living community.



David Scher lives in the Seven Lakes community of Fort Myers. He has been living there full-time for 5 years. Originally from Kalamazoo, Michigan, David came to own a "biker bar" in Benton Harbor, in western Michigan. Weekends featured live entertainment and 100 or more motorcycles in the parking lot. David was a Harley owner and a member of the Shriner Motorcycle Drill Team. Today his pastimes include poker and golf. David has a daughter living in Bonita Springs and a son in the Phillipines.

Toby Gold came to Cape Coral in October, 2014, thinking she would try it out for a year. Happily, she's staying! Toby lived south of Boston and her parents, of blessed memory, had a home in Naples for 25 years so she knew and liked Cape Coral already. Toby's son recently moved to Palm Bay on the East coast and her sister lives in Boca Raton, which makes the entire family Floridians. Toby has 3 yoga certifications. She teaches classes and also does private sessions in restorative and integrated yoga. She attends our Torah Study and is very fond of our Rabbi because she is such a deeply caring person.



Sherry and Rick Graff have lived in the Cape since 2004. They lived in California and thought they would retire there; they even bought a condo. They loved Kauai but decided there wasn't enough activity. They tried vacationing in the Keys but found a lack of activity there, also. Rick spent his school years in North Miami Beach and friends there suggested looking into Cape Coral. They looked, they bought a house and moved here in 2004. They are avid boaters and live on a wide canal. The Graffs have 2 children, both still living in California. After attending High Holiday services at TBS last year and becoming good friends with Fern and Barry Deutch, they recently became members, choosing to support our Temple rather than just "dropping in". Welcome!



Larry Epstein is a newcomer to Cape Coral. He has lived here only a few months but he has already become a familiar face at TBS. Larry was born in Rochester, NY but spent most of his life in California where he was in route sales. He has lived in Texas, where he truly disliked the weather, and has resided on both coasts of Florida. After retiring from his first career, Larry went back to school and became a massage therapist, eventually teaching anatomy, physiology and massage. Not bad for a guy who hated science in school! He has 3 daughters, 5 grandchildren and 1 great grandchild. He keeps busy with volunteer work at some of our local thrift stores and he loves playing tennis. He's always looking for a tennis buddy so connect with him if you'd like to play. Larry loves to learn and is enjoying the opportunity to learn more about Judaism and a path to spirituality. He is thrilled with TBS and is delighted to feel so much a part of our family so quickly.

April and David Freeman were high school sweethearts in Southeastern Michigan. April has been coming to Cape Coral for her whole life since her parents had a winter home here. After tiring of the Michigan winters, the Freemans relocated here. David does commercial heating and cooling and is exceedingly busy right now. You may have seen April's name on our ballot in the recent past and she is again running for Congress. The Freemans have 2 daughters, Ashley and Samantha, and Samantha recently made them the proud grandparents of a baby boy. April said she had been looking for a while for a congregation to join and TBS feels like home. She hopes to join our choir but right now campaign commitments loom large.



Michael & Jude Swanson has lived in the area for a total of 5 years. He first lived in Cape Coral, took a break to go up north and get married to Jude, then returned to live in Old Bridge Village in North Fort Myers. (Really, 2 Swansons in 1 Temple?) Michael is a retired systems integrator who still has some loyal clients who call him for help. Jude is a retired social worker who spent her career working in the mental health field. Jude has 1 son, Michael has 2 sons and they have various and sundry grandchildren spread out in Marco Island, Indianapolis and Minneapolis. Michael and Jude are boaters and are enjoying our wonderful year-round boating season. TBS has made them feel very welcome and they truly enjoy Rabbi Buchen.



We welcome the **Levine Family – Stephanie, sister Lori and mother Joy**. They come from Waukesha, WI and Miami Beach. Stephanie and her significant other and Lori and her husband have purchased condos in Punta Gorda. Both condos are being remodeled. While Lori's was undergoing construction, everyone lived at Stephanie's. Now everyone is in Lori's newly-completed home while Stephanie's is being remodeled. Stephanie lived all over the country, literally from coast to coast, while working in the TV industry. Lori is a retired attorney from Jefferson City, MO. They have a brother in Wisconsin. Mother Joy is now a resident at Calusa Harbour. The family planned to go "Temple shopping" but changed their minds after making TBS their first stop. They love the Rabbi – of course – and we have made them feel welcome. We look forward to making them our friends.



May you be blessed with a sweet year!

Maxine and Bob Morris



*Wishing the TBS Family a
very Happy & Healthy
New Year!*

*Arlene and Stephen
Hershfield*



*Wishing you a year of
love and happiness*

Tobi Gold





*L'Shana Tova-
Peace and Love
May your New Year be
sweet like honey*

*Merna and Jerry Stein
Marsha, Alex and Nicholas Golod*



*May you be inscribed
for a year of
Health, Happiness and
Peace*

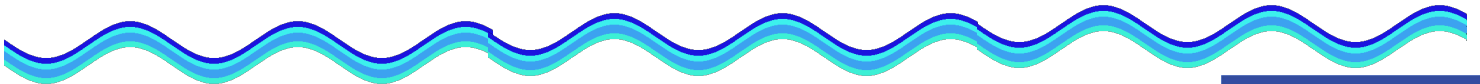
Fern and Barry Deutch





*May this year
bring us all closer
together in spirit and
friendship*

Wendy and Nate Blyveis



***Thank you
to my Temple family
May you be inscribed
for a year of
Health, Happiness and Peace***

Harvey Wolfson



Shana Tova!

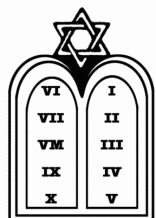


*We wish you year full
of
Health and Happiness*

Merle and Marc Nudel

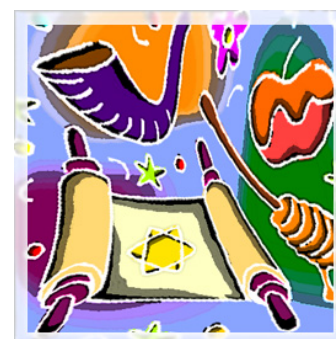


Rosh Hashanah



*May you be blessed
with
Health and Happiness*

*Dr. Arthur Tanenbaum
and
Liz Greco*





*L'Shana Tova May you be blessed for a year
of
Health, Happiness and Peace!*

*Helene and Jorge Glocer
and
Ruth Margolin*



May you be blessed with a sweet year!

Love to our TBS Family

Robin and Jerry Razowsky



*May you be blessed
with a sweet year
and blessed with
Health and Happiness!*

Burt Kurland and Family



*May you be inscribed
for a year of
Health, Happiness and Peace!*

Farkas and Exposito Families



Much love, Health and Happiness
To our TBS Family

Carín and Lee Hanan





L' Shana Tova
May you be blessed
with
Health and Happiness

Sylvia and Elliott Sherman



May you and yours
be blessed with
Health, Happiness and Peace!



Lenore Cohen and Family





*May you be inscribed for a year of Health
and Happiness!*

Marilyn And Edward Becker



*Best wishes for a very
Healthy and Happy New
Year*

*Elaine, Scott & Griswold
Goldwater*



*To my TBS Family
May you all be blessed with
Health, Happiness Peace*

Ruthie & Barry Belkin



*May you be inscribed
for a year of
Health, Happiness
and Peace.*

Marge and Herb Gallop

*May you be blessed
with
Health and Happiness !*

Karen and Jerry Cutler



L'Shana Tova

*Gratitude, Strength
and
mindfulness
to all
this year.*

*Melissa and David
Greenbaum
and Family*

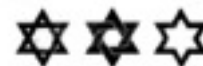


*Gale and Joe
Studna*



L'Shana Tova

Esta and Irv Doliner



L'Shana Tova Tikatevu!

Rheta Kanen and Joseph Liguori

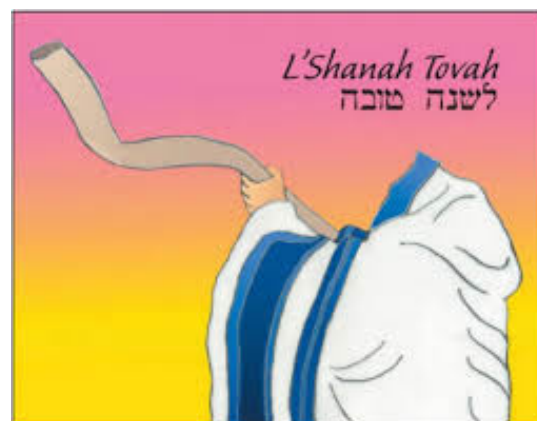


*Enjoy the Holidays
See you soon!*

Marlene and Marc Einstein

*May you be blessed with Health
and Happiness*

Audrey Sands and Robert Small





*May you be blessed with
Health and Happiness*

L'Shana Tova Tikatevu

*Nancy Swanson
and
Neil Marlo*



The Brucker Families



*May you be blessed
with a sweet year!*

L'Shana Tova Tikatevu

Marcia L. Strumwater



Alan Weissman



May you be blessed with
health and happiness

Stanford J Levin

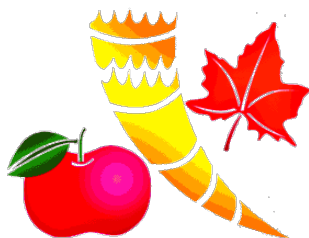


*May everyone be inscribed
for a year of Health and
Happiness and Peace.*

Emily Loewenstein



Happy
New Year



*L'Shana Tova to our great
school staff*

DiLeonardo Family



*May you be inscribed for a year of
Health, Happiness and Peace.*

Judi Roth

Birthdays October 1st- December 31st, 2015

October Birthdays

Bob Morris	1
Melissa Greenbaum	5
Miranda Cameron	8
Marsha Petrone	9
Bert Seidman	10
Evin Exposito	11
Magdalena Engman	14
Nancy Swanson	15
Joy Levine	16
Mark Horowitz	18
Merna Stein	20
Georgette Brothner	23
Scott Kashman	23
Max Brucker	24
Wendy Blyveis	25
Emily Elkins	26



December Birthdays

Lon Traiger	1
David Greenbaum	4
Ellis-Paul Evans	9
Sylvia Sherman	9
David MacIntyre	12
Geraldine Fergel	14
Mark Glick	14
Estelle Birnbaum	17
Ilana Farkas	18
Stephanie Levine	19
Maxine Morris	20
Adele Fox	23
Neil Marlo	23
Ester Weinstein	23
Deborah Martin	25
Herb Gallop	26

November Birthdays

Stephen Hershfield	3
Gale Studna	3
Jonah DiLeonardo	11
Clara Apseloff	12
Adria Weinstein	13
Beverly Meisel	14
Judith Pittel	14
Renato Simenauer	17
Karen Cutler	19
Harvey Wolfson	26
Karle Beneventano	29
Betty Anne Beckerman	29
Emily Loewenstein	29

Anniversaries October 1st- December 31st , 2015

October Anniversaries

Robin & Jerry Razowsky	14
Elyse & Mark Smith	22
Esther & Carlos Weinstein	24

November Anniversaries

Kathy & Scott Brucker	2
Roslyn & Eli Berkofsky	11
Jeanette & Murry Robbins	14
Sheila & Robert Vinikoor	19
Devora & Irv Buchen	24
Mara & Ezra Exposito	27

December Anniversaries

April & David Freeman	1
Ruth & Barry Belkin	6
Marlene & Mark Einstein	14
Merna & Jerry Stein	16
Judy & bill Padoll	27

Yahrzeit Donations
July 1 through September 1, 2015



Seidmann, Bert
 Bonnie Ann Ayers
 Milton Roszkoph, Benard Roszkoph,
 Bertram Roszkoph
 Annalee Seidman
 Anne & Gerald Gordon
 Dorothy Gordon and Evelyn Post
 Marilyn Albion
 Hannah Nichols
 Esta & Irwin Doliner
 Ida Arnowitz
 David Koffman
 Jason Gordon
 Bill Padoll
 Jennie Fly
 Karen & Jerry Cutler
 Jerome Peters

 Ruth Wasserman
 Kurt Wasserman
 Magda & John Engman
 Magdalene Weir
 Ruby Engman
 Sharon Rosenberg
 Rabbi Cynthia Culpepper,
 Harold Gutentag, Rose Braidman
 Betty Ann Berckman
 Rose Berckman, Nathan Beckerman
 Emily Loewenstein
 Ruben Lipsky & Doris Loewenstein
 Robin & Jerry Razowsky
 Seymour Orlov
 Helene & Jorge Glocer
 Solomon Margolin
 Leah & Donald Skinner
 Stacy Boyd & Anna
 Finkelstein
 Marilyn Albion
 Louis Nichols
 Doris Bloomston
 Isa Mae Corenblum, Rose
 Bloomston
 Arlene Ans Harvey Sage
 Muray turner and Florence Turner
 Lenore Cohen
 Tilie Miller
 Sheila Wolfson
 Carin and Lee Hanan
 Charles Cutler
 Karen and Jerry Cutler
 Joseph Antonelli
 Robin and Jerry Razowsky
 Sam Razowsky
 Barby and Joel Barlow
 Bertha Fergal, Charles Goldberg,
 Ann Stern, Martin Hanan,
 Sheila Wolfson
 Alan Weissman
 Alicia Weissman

Mishaberach
July 1 through - September 1, 2015

Rheta Kanen
 Birthday wishes to Peter Simenauer
 Fern & Barry Deutch
 Condolence Howard Rudolph
 Condolence Harvey Wolfson (Sheila)
 Condolence Lee Hanan's brother Martin
 Mazel Tov Hanan New Grandchild
 Mishaberach Lee Hanan
 Marilyn & Edward Becker
 Condolence Sheila Wolfson
 Judith Pittel
 Condolence Sheila Wolfson
 Robin & Jerry Razowsky
 Condolence Sheila Wolfson
 Mishaberach Harvey & Sheila Wolfson
 Sharon Rosenberg
 Condolence Lee Hanan's brother Martin
 Condolence Sheila Wolfson
 Mishaberach Herb Gallop, Donna Weil,
 Lorraine Hayman
 Wendy & Nate Blyveis
 Condolence Sheila Wolfson
 Maxine & Robert Morris
 Condolence Sheila Wolfson, Martin Hanan
 Temple Beth Shalom Sisterhood
 Sheila Wolfson
 Belle & Stuart Berman
 Condolence Sheila Wolfson
 Mishaberach Herb Gallop, Sheila Wolfson
 & Dr. Irv Lazovick

Book Plate

Sharon Rosenberg
 In honor of Peter Simenauer's 80th birthday

General Donation

Avidor Turner

Tree of Life

Fern & Barry Deutch
 Arlene & Stephan Hershfield
 Robin & Jerry Razowsky
 Barbara & Arnold Schwartz
 Rabbi & Irv Buchen
 Alan Weissman
 Merle & Marc Nudel
 Barby & Joel Barlow

Rabbi's Discretionary Fund

Wendy & Nathan Blyveis
 Gale & Joseph Studna
 Harvey Wolfson
 Marsha & Bruce Moskowitz

Religious School Education

Rebecca Garrett
 In memory of Sylvia Kirstein Escude

John & Mary Kensek General Donation
 Anonymous General Donation
 Dennis & Joan memory of Sheila Wolfson
 Dr. A. Tanenbaum & Liz Greco
 memory of Sheila Wolfson
 Esther Parsky memory of Sheila Wolfson
 Tuesday Night Poker Group



Tile

Importers & Distributors of quality

- Tile ● Marble ● Carpet
- Bath Fixtures and supplies

Large selection in stock
Great quality at great prices
Two Huge Showrooms
We Deliver

916 S.E. 15th Avenue
Cape Coral, FL 33990
Tel: (239) 772-5815

16165 S. Tamiami Trail
Fort Myers, FL 33908
Tel.: (239) 267-1445

www.pcctile.com

The Modern Corporation

"Be Smart"

Buy your Car the Modern Way!

Abby
Internet Sales

239-277-9191 • Fax: 277-9998
3535 Cleveland Ave. • Fort Myers, FL 33901
See us on the Web! www.modern-auto.com
E-mail: moderncorp@earthlink.net

DANIEL BENDETOWICZ, M.D., P.A.

Board Certified in Internal Medicine



INTERNIST OF THE YEAR AWARD

**Presented by the Florida Chapter
of the American College
of Physicians**

Call us today.
Now accepting new patients.

985-1050 www.doctorben.net

15750 New Hampshire Court, Suite D, Fort Myers, FL 33908

Located on the corner of Summerlin & Winkler



Pool & Spa Service

REPAIRS • SUPPLIES • RENOVATIONS • SPAS

(239) 542-3066

BARRIE ROSS, C.S.P.
poolczar@mindspring.com

1520-A SE 46th Lane
Cape Coral, FL 33904

State Cert. Lic. # CPC043145



8am - 6pm • Open 7 Days a week

17501 Pine Ridge Rd. • PO Box 2949

Ft. Myers Beach, FL 33932-2949

www.SafeTStorage.com

(239) 466-8181

We'll give you \$20

Have a friend present this card when they become a new
Safe-T-Storage tenant, and **WE'LL SEND YOU \$20**

YOUR NAME: _____

ADDRESS: _____

Let's help TBS

Place an add here either for your
business or your friends business.

For more information
please contact:

Larry Epstein.
817-526-9819

larryjoel613@gmail.com

A FIVE STAR INDEPENDENT, ASSISTED LIVING AND SKILLED NURSING COMMUNITY



For Folks Who Simply Love the Water

You know the type ... they'd rather have lunch on the lanai and gather with friends around the river-view pool. They enjoy strolling riverfront walkways and toasting the setting sun with exceptional waterside dining. Best of all, they have discovered waterfront living that is easily within reach. There are no buy-ins or expensive endowments required, and rental rates are surprisingly affordable. If you love the water, you're going to love Calusa Harbour!

Start the year right with a complimentary lunch and tour.

Experience Incredible Senior Living on the Caloosahatchee!

- Spectacular river and city views
- Exceptional chef-prepared meals
- Waterfront dining
- Cheerful, roomy apartments
- Heated riverfront pool
- Clubs, activities and entertainment
- Full-service salon
- Exercise and wellness programs
- Transportation 7 days a week
- Classes and learning events
- Weekly housekeeping
- Monthly rentals (no buy-in)

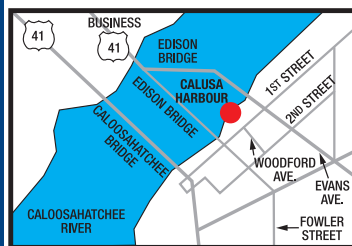
CALUSA HARBOUR



2525 First Street, Fort Myers, FL 33901 • (239) 332-3333 • www.CalusaHarbour.com



Assisted Living Facility #6066



High Holiday-Edition
2015/5776

Reports from Temple leaders and committees, photos from recent events and celebrations along with news about upcoming events and ongoing programs



TEMPLE BETH SHALOM

www.templebethshalom.org

Temple Beth Shalom
702 SE 24th Avenue
Cape Coral, Florida 33990

Return Address Requested